

LEADVILLE, COLORADO

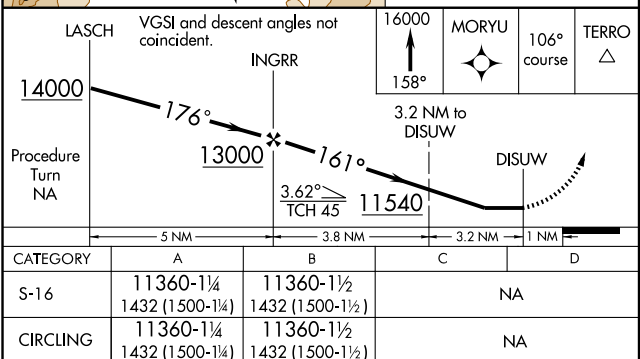
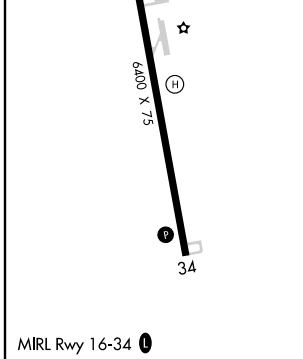
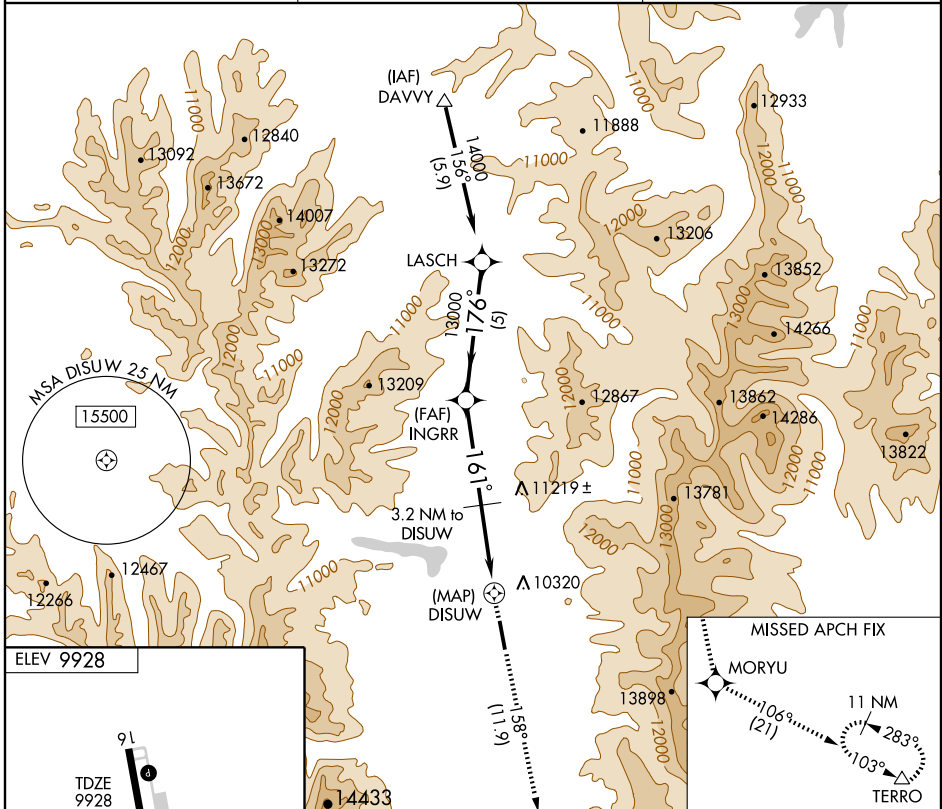
AL-9146 (FAA)

APP CRS **161°**
 Rwy Idg **6400**
 TDZE **9928**
 Apt Elev **9928**

GPS RWY 16
 LEADVILLE/LAKE COUNTY (LXV)

NA MISSED APPROACH: Climb to 16000 via 158° course to MORYU WP, then via 106° course to TERRO WP and hold.

ASOS **118.375** DENVER CENTER **119.85 363.15** UNICOM **122.8 (CTAF)**



LEADVILLE, COLORADO
 Orig 09127

LEADVILLE/ LAKE COUNTY (LXV)
GPS RWY 16
 FAA-CT-8080-7C

39°13'N - 106°19'W
Figure 253—Airport Diagram.

SW-1, 10 MAR 2011 to 07 APR 2011

SW-1, 10 MAR 2011 to 07 APR 2011